

# SMD POWER INDUCTORS *Medium current purpose*

## Series DI - M

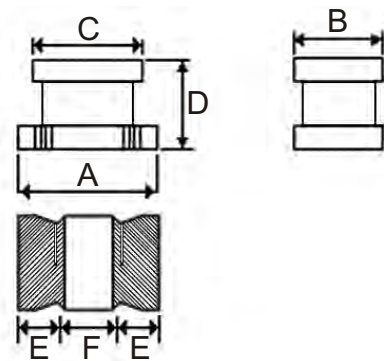


### PRODUCT IDENTIFICATION

$\frac{DI}{a}$     $\frac{20}{b}$     $\frac{M}{c}$     $\frac{18}{d}$     $\frac{1}{e}$     $\frac{K}{f}$     $\frac{10U}{g}$

- a : Type of products - SMD Power Inductors DI - M series
- b : Dimension(mm) - 16 : 3.2X1.6, 25 : 3.2X2.5, 32 : 4.5X3.2
- c : Materials - Medium Current
- d : Thickness(mm) - 18 = 1.8, 20 = 2.0, 26 = 2.6
- e : Packing - PCS/REEL - R = 750, 1 = 1000, 2 = 2000, K = 2500,
- f : Tolerance - K :  $\pm 10\%$    M :  $\pm 20\%$
- g : Inductance - 100N = 0.1  $\mu$  H, 10U = 10.0  $\mu$  H, 1M2 = 1200  $\mu$  H

### SHAPES & DIMENSIONS



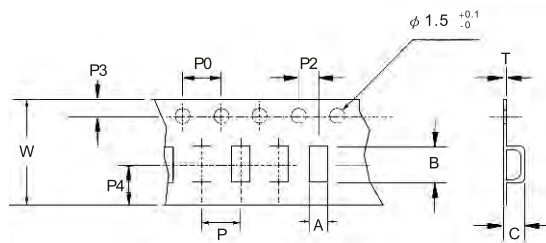
Unit : mm

Type	A	B	C	D	E (typ.)	F (typ.)
DI16M18	3.2 $\pm$ 0.3	1.6 $\pm$ 0.2	2.3 $\pm$ 0.2	1.8 $\pm$ 0.4	0.9	1.3
DI25M20	3.2 $\pm$ 0.3	2.5 $\pm$ 0.2	2.5 $\pm$ 0.2	2.0 $\pm$ 0.4	0.9	1.3
DI32M26	4.5 $\pm$ 0.3	3.2 $\pm$ 0.2	3.6 $\pm$ 0.2	2.6 $\pm$ 0.4	1.4	1.6

### GENERAL SPECIFICATION

- ◆ Rise Temperature : 40°C Max.
- ◆ Operating Temperature : -25°C to +105°C
- ◆ Resistance to solder heat : 250°C / 10 Sec.

### TAPE DIMENSIONS



Unit : mm

Type	A	B	C	W	P	P0	P2	P3	P4	T	Q'ty/Reel	
											7" Reel	13" Reel
DI16M18	2.3 $\pm$ 0.1	3.6 $\pm$ 0.1	2 $\pm$ 0.05	8 $\pm$ 0.2	4 $\pm$ 0.1	4 $\pm$ 0.1	2.0 $\pm$ 0.1	1.75 $\pm$ 0.1	2.75 $\pm$ 0.1	0.2 $\pm$ 0.02	2000	N/A
DI25M20	2.9 $\pm$ 0.1	3.6 $\pm$ 0.1	2.2 $\pm$ 0.05	8 $\pm$ 0.2	4 $\pm$ 0.1	4 $\pm$ 0.1	2.0 $\pm$ 0.1	1.75 $\pm$ 0.1	2.75 $\pm$ 0.1	0.2 $\pm$ 0.02	2000	N/A
DI32M26	3.6 $\pm$ 0.1	4.9 $\pm$ 0.1	3.1 $\pm$ 0.05	12 $\pm$ 0.2	4 $\pm$ 0.1	4 $\pm$ 0.1	2.0 $\pm$ 0.1	1.75 $\pm$ 0.1	4.75 $\pm$ 0.1	0.3 $\pm$ 0.02	750	2000

# SMD POWER INDUCTORS *Medium current purpose*

## Series DI - M

### ELECTRICAL CHARACTERISTICS

Test Frequency 0.8  $\mu$  H ~ 8.2  $\mu$  H @ 100KHz / 0.25V      10  $\mu$  H ~ 10000  $\mu$  H @ 1KHz / 0.25V

#### DI16M18

Part Number	Inductance ( $\mu$ H)	Test Frequency (KHz)	SRF (MHz) min.	RDC ( $\Omega$ ) max.	IDC (mA) max.
DI16M182 120N	0.12	100	250	0.112	970
DI16M182 220N	0.22	100	250	0.140	850
DI16M182 330N	0.33	100	200	0.160	800
DI16M182 470N	0.47	100	180	0.210	700
DI16M182 1U	1	100	100	0.390	510
DI16M182 2U2	2.2	100	50	0.570	430
DI16M182 4U7	4.7	100	31	0.910	340
DI16M182 5U6	5.6	100	27.5	0.950	330
DI16M182 6U8	6.8	100	24	1.320	300
DI16M182 8U2	8.2	100	22	1.720	240
DI16M182 10U	10	1	20	1.820	230
DI16M182 12U	12	1	18	1.920	200
DI16M182 15U	15	1	16	2.020	190
DI16M182 18U	18	1	15	2.450	180
DI16M182 22U	22	1	14	4.200	160
DI16M182 27U	27	1	12	4.500	150
DI16M182 33U	33	1	10	7.500	130
DI16M182 56U	56	1	8.5	11.700	98
DI16M182 68U	68	1	8	12.000	95
DI16M182 82U	82	1	7.5	13.500	85
DI16M182 100U	100	1	7	16.800	80
DI16M182 120U	120	1	6.5	17.200	75
DI16M182 150U	150	1	6	18.200	70
DI16M182 180U	180	1	5	23.200	65
DI16M182 220U	220	1	4.5	25.200	60
DI16M182 270U	270	1	4	40.200	55
DI16M182 330U	330	1	3	50.200	50

#### DI25M20

Part Number	Inductance ( $\mu$ H)	Test Frequency (KHz)	SRF (MHz) min.	RDC ( $\Omega$ ) max.	IDC (mA) max.
DI25M202 1U	1	100	96	0.117	800
DI25M202 1U8	1.8	100	96	0.140	780
DI25M202 2U2	2.2	100	64	0.169	600
DI25M202 2U7	2.7	100	64	0.171	550
DI25M202 3U3	3.3	100	50	0.180	500
DI25M202 4U7	4.7	100	43	0.260	450
DI25M202 6U8	6.8	100	35	0.300	430
DI25M202 8U2	8.2	100	21	0.392	400
DI25M202 10U	10	1	26	0.572	300
DI25M202 12U	12	1	24.5	0.650	290
DI25M202 15U	15	1	23	0.700	285
DI25M202 18U	18	1	20	0.800	265
DI25M202 22U	22	1	19	0.923	250
DI25M202 27U	27	1	12	1.100	240
DI25M202 33U	33	1	13.5	1.352	230
DI25M202 47U	47	1	15	1.690	170
DI25M202 56U	56	1	16.5	2.000	160
DI25M202 68U	68	1	18	2.670	150
DI25M202 100U	100	1	10	4.550	100
DI25M202 150U	150	1	10	5.800	95
DI25M202 180U	180	1	8.5	6.270	90
DI25M202 220U	220	1	6.8	10.900	70
DI25M202 330U	330	1	5.6	13.000	60
DI25M202 390U	390	1	5	22.100	60
DI25M202 470U	470	1	5	24.700	60
DI25M202 560U	560	1	5	28.600	60

#### DI32M26

Part Number	Inductance ( $\mu$ H)	Test Frequency (KHz)	SRF (MHz) min.	RDC ( $\Omega$ ) max.	IDC (mA) max.
DI32M262 1U	1	100	100	0.080	1080
DI32M262 1U5	1.5	100	80	0.090	1000
DI32M262 2U2	2.2	100	60	0.110	900
DI32M262 3U3	3.3	100	47	0.130	800
DI32M262 4U7	4.7	100	35	0.150	750
DI32M262 6U8	6.8	100	30	0.200	720
DI32M262 10U	10	1	23	0.240	650
DI32M262 15U	15	1	20	0.320	570
DI32M262 22U	22	1	15	0.600	420
DI32M262 33U	33	1	12	1.000	310
DI32M262 47U	47	1	10	1.100	280
DI32M262 56U	56	1	9	1.340	260
DI32M262 68U	68	1	8.4	1.700	220
DI32M262 100U	100	1	6.8	2.200	190
DI32M262 150U	150	1	5.5	3.500	130
DI32M262 220U	220	1	4.5	4.000	110
DI32M262 330U	330	1	3.6	6.800	100
DI32M262 470U	470	1	3	8.500	90